

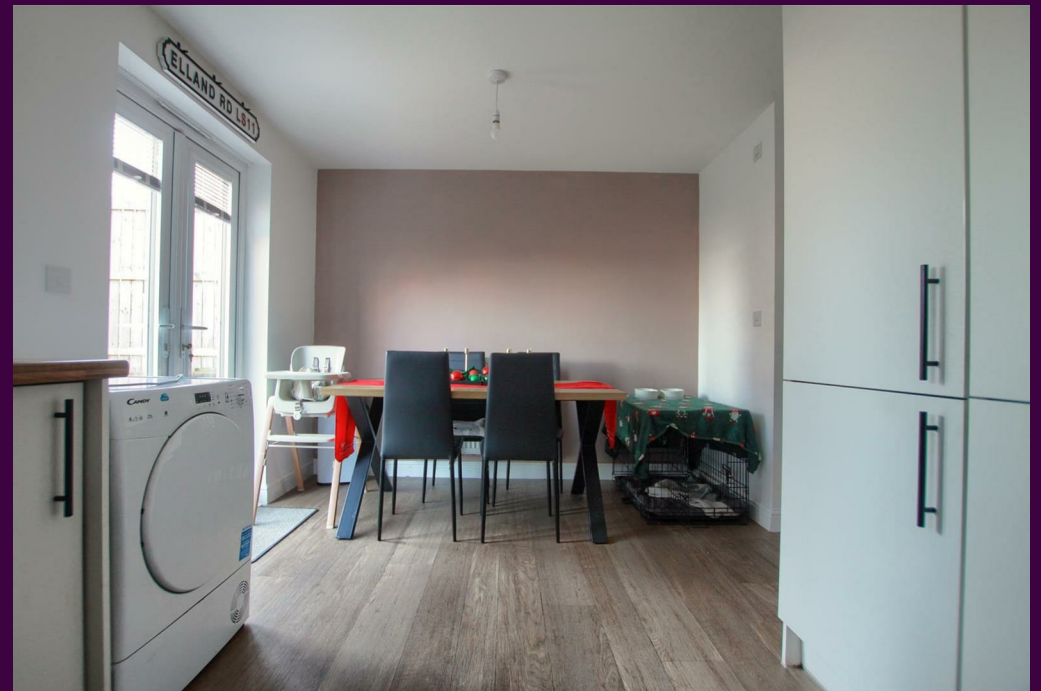
Wolseley Way, Hemlington



Asking Price £175,000

**IH** INGLEBY HOMES









Built to this very popular design, by Taylor Wimpey, this impressive and deceptively spacious three bedroom property certainly merits early inspection. Being attractively priced for an early sale, internal inspection is highly recommended.

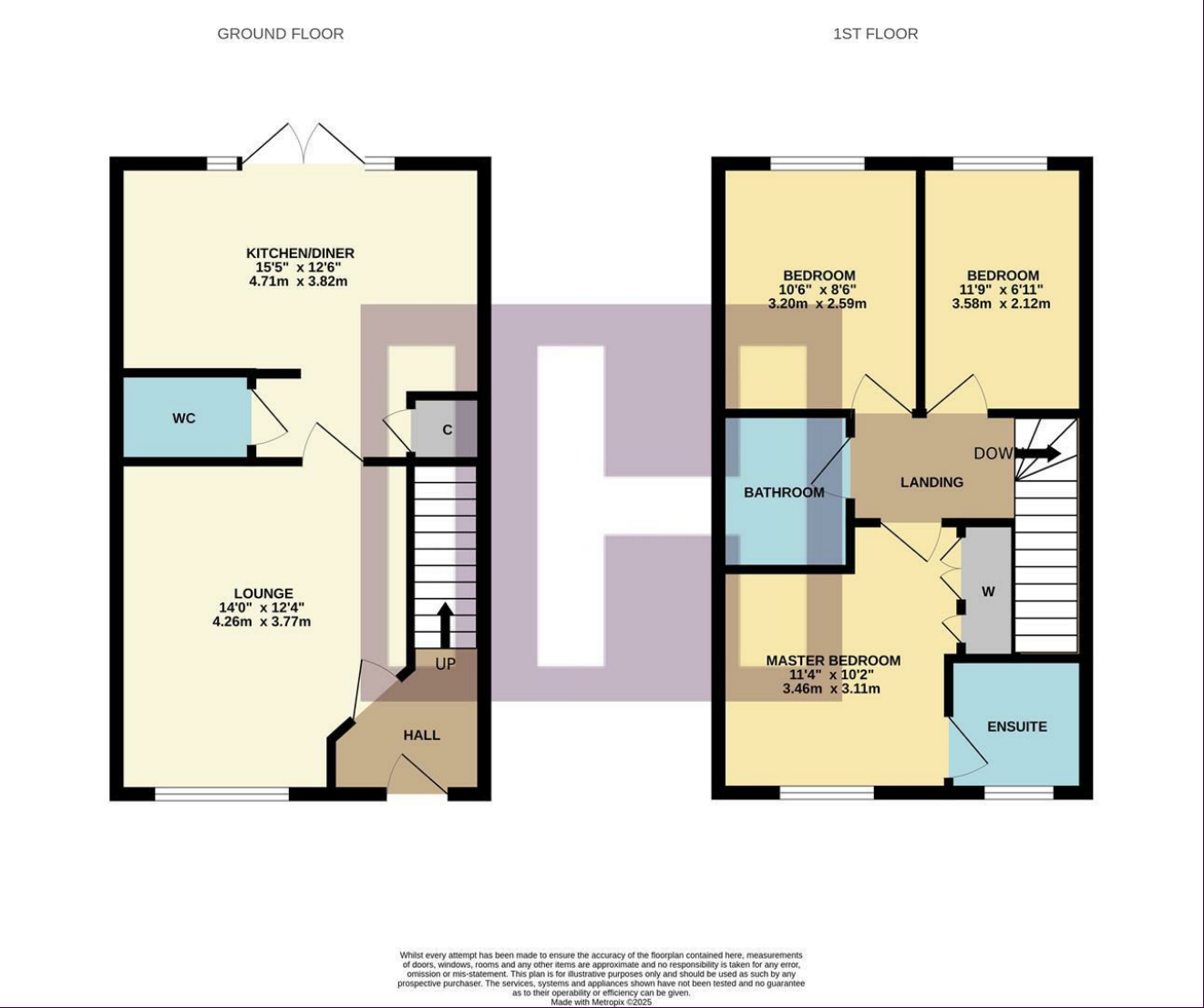
Boasting a fantastic position facing out onto open green space, on this desirable 'Elderwood Park' development with an enclosed rear garden, and off-riiad parking for two vehicles in front.

Internally, being less than five years old, the home still has a brand-new feel, with features such as the modern kitchen, and bathrooms, all being in terrific condition, modern and stylish.

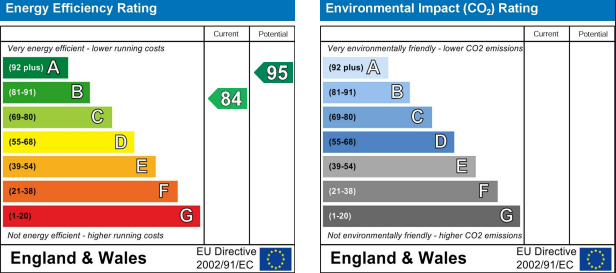


The accommodation comprises an entrance hall, lounge, inner hall with cloakroom/WC and superb open-plan kitchen/diner on the ground floor. The first floor delivers three good bedrooms, the 'Master' with an impressive ensuite, separate modern family bathroom.

# The Layout



Council Tax Band: C  
Tenure: Freehold



# The Location





- Priced for an early sale, viewing advised
- Call 01642 671025
- Sought-after 'Elderwood Park' development
- Taylor Wimpey built
- Great position with open-green space ahead